

ACCESSORIES FOR  
AUTOMATIC BOLLARDS

SOS:Acoustic sirens detector

CEM: Break emergency  
button

TIMER: Digital controller

SEM-2 LRV: Two lights  
traffic light

SEM-3L RRV: Three  
lights traffic light

TOTEM: Street cabinet

RM: Metal detector

SPIRA:Loop detector for RM

CART-DK: Signpost

CITY-PROX:Badge reader

PROXY-CARD: Badge

SL-LAMP: Flashing light

NEOKEY:Proximity key

SOFT-MAN-RC:control  
software

ACCESSI MAN-RC:  
Self-learning  
programming unit

GYGA-BOX:Receiver

“DAKOTA” SUMMARY SESSION	DK Ø210-500	DK Ø210-500 LIGHTS	DK/500 L	DK/700 L	DK Ø210-700	DK Ø210-700 LIGHTS	DEFENDER Ø210-500	EASY Ø200-700	EASY Ø115-500
DIAMETER and HEIGHT	Ø210 h500	Ø210 h500	Ø210 h500	Ø210 h700	Ø210 h700	Ø210 h700	Ø273 h700	Ø194 h700	Ø115 h490
RISE TIME sec.	6	6	6	9	9	9	6	9	6
DAILY MOVES 24 h	1500	1500	1500	1500	1500	1500	1000	500	500
BREAK-IN RESISTANCE	400kj	400kj	400kj	400kj	400kj	400kj	600kj	250kj	70kj
PROTECTION LEVEL	IP67	IP67	IP67	IP67	IP67	IP67	IP67	IP67	IP67
LIGHTS		□	□	□		□	□	□	
BUZZER			□	□					
BLACK-OUT SPONTANEUS LOWERING	□	□	□	□	□	□	□		
EMERGENCY MANEUVER	□	□	□	□	□	□	□	□	□
LIGHT REFLECTANT PAPER	□	□	□	□	□	□			
PAINT+LIGHT REFLECTANT STRIP	□	□	□	□	□	□		□	□
PAINT	□	□	□	□	□	□	□	□	□
LIGHT REFLECTANT PAPER PERSONALIZATIO	□	□	□	□	□	□	□		
INOX VERSION	□	□	□	□	□	□	□		
HEATER	□	□	□	□	□	□	□		
COLORS ON REQUEST	□	□	□	□	□	□	□		

035507 Vers.2 GB



Retailer/Installer partner



O&O s.r.l  
Via Europa, 2  
42015 CORREGGIO (RE) Italy  
tel.+39 0522 74 01 11  
fax +39 0522 63 12 90  
e-mail oeo@oeo.it



www.oeo.it  
Visit our web site and check all our products features.

# ELECTROMECHANICAL BOLLARDS RANGE



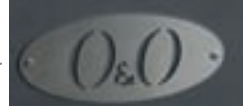
safety & quality  
at your service



Totem is a street cabinet suitable for the support and installation, in urban areas, means of controlling for bollards, barriers and any other device equipped with fittings for attachment to DIN rail. Consists of one or two overlapping modules made of treatment cataphoresis steel and painted gray sable, able to withstand long corrosion weathering. The form below is suitable to house electrical equipment to manage the entire system. The module above, however, has an aluminum front panel suitable for mounting of any accessory control like badge reader, dialer number, interphone and so on (no application on aluminum panel at our expense). It can also be fitted with a panel suitable for the accommodation of a traffic light, 3 lights approved. Elegant, functional and innovative design, the totem O & O appears to be a true subject of street furniture.



Hat light at 360 ° , formed by a ring of high brightness LED, green when the bollard is to be lowered and red, when lifted. The light LED ring flashes when the drive units are in motion. Complete with buzzer during the movement of the equipments connected to it.



logo on AISI 304  
stainless steel plate  
laser cut.



TOTEM complete with approved  
traffic lights at three lights.



Lower module with and without  
hat bright LED.





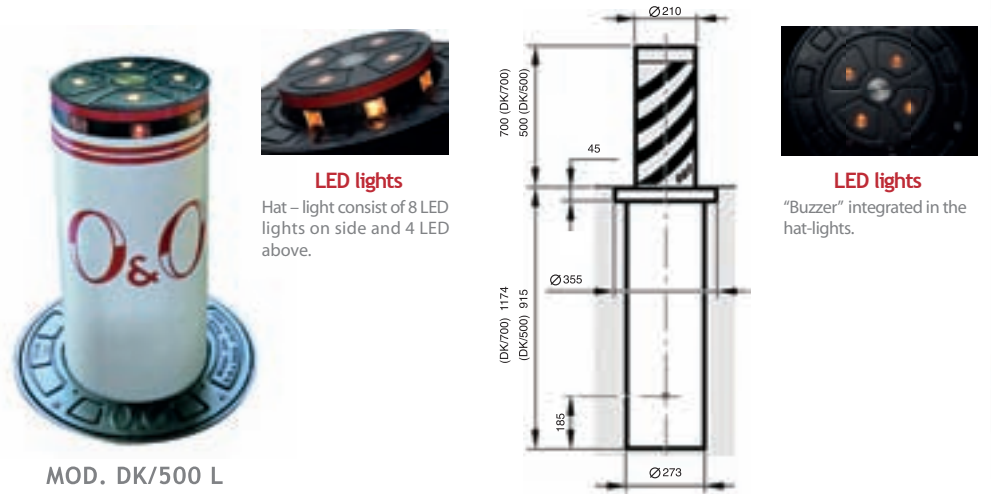
## APPROVED AUTOMATIC BOLLARDS “DAKOTA”

### DK/500L DK/700L



Primary objective of bollards approved, is to allow a return to the livability and safety by protecting communal areas such as squares (impeding the machines transition), hospitals, embassies, public building. The bollards have been approved by the Ministry of Transport and appear to be an elegant solution, effective and functional for the above problems. The bollards DK/500L and DK/700L are characterized by 4 key features

- REVERSIBILITY**: very strong on the need for a sudden and spontaneous reduction in the absence of current.
- STATIC LOAD AND DYNAMIC LOAD**: high accentuated in the approved model as it has to support high weigh and possible shocks due heavy traffic (all our bollards are certified by the Ministry of Transport and are subject to crash testing to certify the ability to dynamically load and breakthrough resistance).
- VISIBILITY**: obtained through the application on the entire surface of stem at approved light reflectant paper. In addition, the Dakota has gifted by a hat - light LED high power visual at night and by day.



MOD. DK/500 L

Electromechanical bollard Ø210 mm H:500 mm with light reflectant paper stem covered.

SUPPLY VOLTAGE	230V±10% 50/60 Hz	230V±10% 50/60 Hz
HAND MANOEUVRE	Spontaneous	Spontaneous
OUTSIDE CONTROL UNIT	mod. CDK	mod. CDK
WORK TYPE	Max. 1500 Day maneuvers	Max. 1500 Day maneuvers
LIFT-UP TIME (Sec.)	6"	9"
PROTECTION LEVEL	IP 67 (NEMKO certification)	IP 67 (NEMKO certification)
DYNAMIC LOAD (CRASH-TEST)	10.500 JOULE*	10.500 JOULE*
BREAK-IN RESISTANCE	400.000 JOULE*	400.000 JOULE*
WORKING TEMPERATURE	-15° C +60° C	-15° C +60° C
MOVEMENT	With slowing down limit	With slowing down limit

(\*) **JOULE** : Energy generated by impact of a vehicle  
(Ex: vehicle weighing 1.000 Kg that traveling at 50 Km/h, develops an energy of ~ 100.000 Joules upon impact).



## AUTOMATIC BOLLARDS “DAKOTA”

### DK Ø 210/500 LIGHT DK Ø 210/700 LIGHT

The primary target of this realization is protection and defense of sensitive sites such as shops, jewelers, prestigious building inputs, hotels and so on. On each one of these DAKOTA, there is the possibility of applying light reflectant paper on the stem or painted with choice colors (RAL) finally, you can have the stem in stainless steel AISI 304. All these solutions can be integrated with hat - light LED high power visual at night and by day (DK Ø210-500 LIGHTS and DK Ø210-700 LIGHTS).



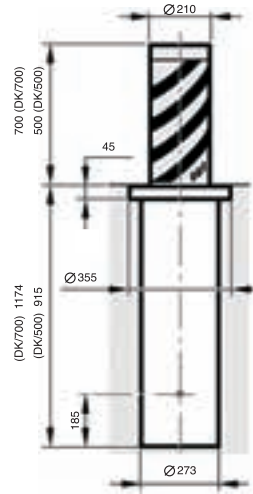
DK Ø 210/500 LIGHT INOX

SUPPLY VOLTAGE	230V±10% 50/60 Hz	230V±10% 50/60 Hz
HAND MANOEUVRE	Spontaneous	Spontaneous
OUTSIDE CONTROL UNIT	mod. CDK-STD	mod. CDK-STD
WORK TYPE	Max. 1500 Day maneuvers	Max. 1500 Day maneuvers
LIFT-UP TIME (Sec.)	7"	9"
PROTECTION LEVEL	IP 67 (NEMKO certification)	IP 67 (NEMKO certification)
DYNAMIC LOAD (CRASH-TEST)	8.000 JOULE*	8.000 JOULE*
BREAK-IN RESISTANCE	400.000 JOULE*	400.000 JOULE*
WORKING TEMPERATURE	-15° C +60° C	-15° C +60° C
MOVEMENT	With slowing down limit	With slowing down limit

(\*) **JOULE** : Energy generated by impact of a vehicle  
(Ex: vehicle weighing 1.000 Kg that traveling at 50 Km/h, develops an energy of ~ 100.000 Joules upon impact).



Hat – light consist of 8 LED lights on side and 4 LED above



DK Ø 210/500  
DK Ø 210/500 LIGHT



DK Ø 210/700 LIGHT VERN

DK Ø 210/700  
DK Ø 210/700 LIGHT

SUPPLY VOLTAGE	230V±10% 50/60 Hz	230V±10% 50/60 Hz
HAND MANOEUVRE	Spontaneous	Spontaneous
OUTSIDE CONTROL UNIT	mod. CDK-STD	mod. CDK-STD
WORK TYPE	Max. 1500 Day maneuvers	Max. 1500 Day maneuvers
LIFT-UP TIME (Sec.)	9"	9"
PROTECTION LEVEL	IP 67 (NEMKO certification)	IP 67 (NEMKO certification)
DYNAMIC LOAD (CRASH-TEST)	100.000 JOULE*	100.000 JOULE*
BREAK-IN RESISTANCE	600.000 JOULE*	600.000 JOULE*
WORKING TEMPERATURE	-15° C +60° C	-15° C +60° C
MOVEMENT	With slowing down limit	With slowing down limit



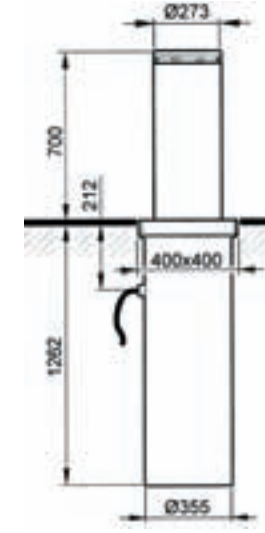
DEFENDER Ø273/700

SUPPLY VOLTAGE	230V±10% 50/60 Hz	230V±10% 50/60 Hz
HAND MANOEUVRE	Spontaneous or blocked from pad battery	Spontaneous or blocked from pad battery
OUTSIDE CONTROL UNIT	mod. CDK-STD	mod. CDK-STD
WORK TYPE	Max. 100 Day maneuvers	Max. 100 Day maneuvers
LIFT-UP TIME (Sec.)	9"	9"
PROTECTION LEVEL	IP 67 (NEMKO certification)	IP 67 (NEMKO certification)
DYNAMIC LOAD (CRASH-TEST)	100.000 JOULE*	100.000 JOULE*
BREAK-IN RESISTANCE	600.000 JOULE*	600.000 JOULE*
WORKING TEMPERATURE	-15° C +60° C	-15° C +60° C
MOVEMENT	With slowing down limit	With slowing down limit

(\*) **JOULE** : Energy generated by impact of a vehicle  
(Ex: vehicle weighing 1.000 Kg that traveling at 50 Km/h, develops an energy of ~ 100.000 Joules upon impact).



Steel stem 6 mm thick, cataphoresis treatment and color gray sable painted.



## STANDARD AUTOMATIC BOLLARDS “EASY”

### EASY Ø115/500 EASY Ø200/700

Economy and quality. These are the roots of the new bollards EASY. born after a careful market investigation, thorough study on the techniques of design and crafting the details, which have enabled the creation of a simple deterrent, responding to customer needs and requirements does not ignore those qualities that have always distinguished the O & O products. All at a competitive price. EASY is produced in two models: the first, EASY Ø115-500, leads Ø115 mm stem diameter up 500 mm with light reflectant paper on the stem to improve its visibility. This model not support hat - light. The second model called EASY Ø200-700, leads Ø200 mm stem diameter up 700 mm with light reflectant paper on the stem and led hat-light ensuring complete visibility at night and by day.



EASY Ø115/500

SUPPLY VOLTAGE	230V±10% 50/60 Hz	230V±10% 50/60 Hz
HAND MANOEUVRE	Spontaneous	Spontaneous
OUTSIDE CONTROL UNIT	mod. CDK-ES	mod. CDK-ES
WORK TYPE	Max. 500 Day maneuvers	Max. 500 Day maneuvers
LIFT-UP TIME (Sec.)	7"	9"
PROTECTION LEVEL	IP 67 (NEMKO certification)	IP 67 (NEMKO certification)
DYNAMIC LOAD (CRASH-TEST)	6.000 JOULE*	10.000 JOULE*
BREAK-IN RESISTANCE	70.000 JOULE*	250.000 JOULE*
WORKING TEMPERATURE	-20° C +60° C	-20° C +60° C
MOVEMENT	With slowing down limit	With slowing down limit

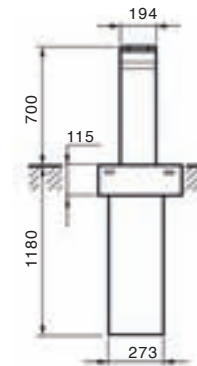
(\*) **JOULE** : Energy generated by impact of a vehicle  
(Ex: vehicle weighing 1.000 Kg that traveling at 50 Km/h, develops an energy of ~ 100.000 Joules upon impact).



H: 50 mm light reflectant strip on painted stem grey RAL 7022 color.



H: 50 mm light reflectant strip on painted stem grey RAL 7022 color. Equipped with hat - light LED high power visual at night and by day.



EASY Ø200/700

SUPPLY VOLTAGE	230V±10% 50/60 Hz	230V±10% 50/60 Hz
HAND MANOEUVRE	Spontaneous	Spontaneous
OUTSIDE CONTROL UNIT	mod. CDK-ES	mod. CDK-ES
WORK TYPE	Max. 500 Day maneuvers	Max. 500 Day maneuvers
LIFT-UP TIME (Sec.)	7"	9"
PROTECTION LEVEL	IP 67 (NEMKO certification)	IP 67 (NEMKO certification)
DYNAMIC LOAD (CRASH-TEST)	6.000 JOULE*	10.000 JOULE*
BREAK-IN RESISTANCE	70.000 JOULE*	250.000 JOULE*
WORKING TEMPERATURE	-20° C +60° C	-20° C +60° C
MOVEMENT	With slowing down limit	With slowing down limit

(\*) **JOULE** : Energy generated by impact of a vehicle  
(Ex: vehicle weighing 1.000 Kg that traveling at 50 Km/h, develops an energy of ~ 100.000 Joules upon impact).